



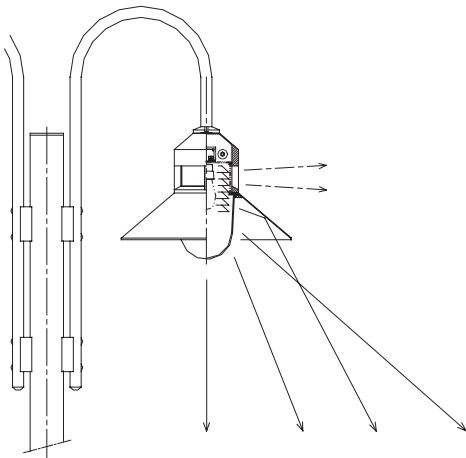
## Pole Top Luminaires

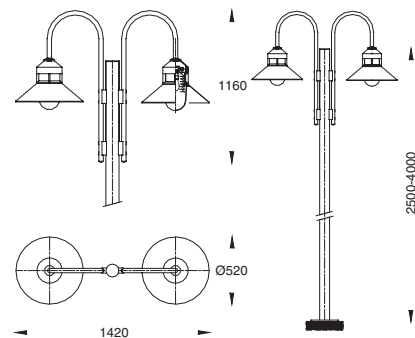
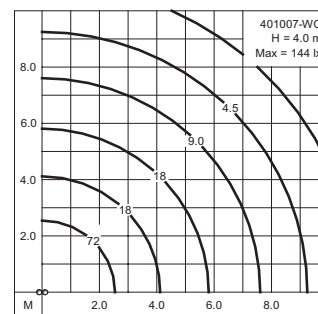
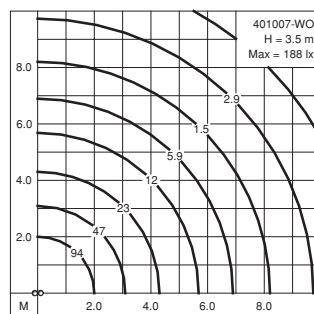
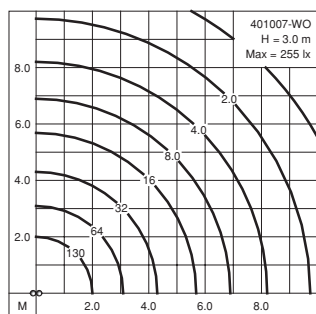
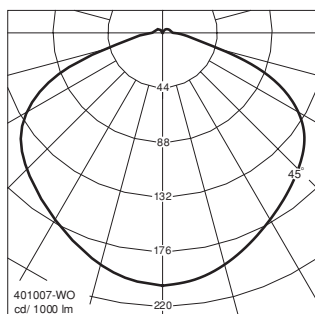
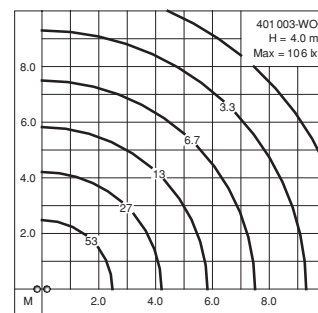
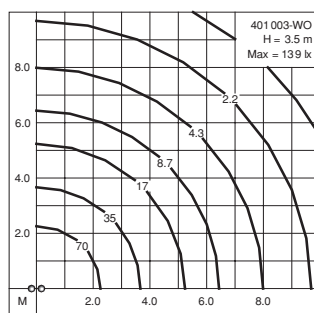
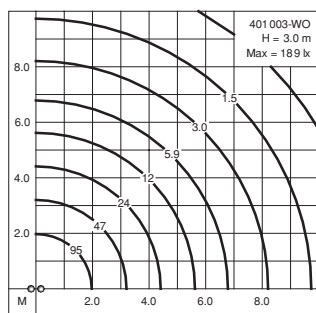
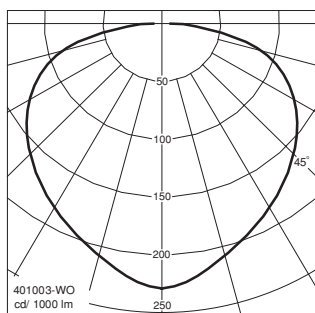
**IP 55** Dustproof and Jetproof conforming to DIN, VDE, IEC.  
**Class I.**

These luminaires with rotationally symmetrical light distribution and additional upper light access output providing a pleasant glarefree lighting suitable for private and public areas, hotel, parks, gardens and pedestrian precincts. These luminaires for pole heights of 3000-4000 mm. with hot dipped galvanized tubular bent bracket for installation in single, double or triple configuration.

- Corrosion resistant die cast aluminium alloy
- Stainless steel screws
- Ultraviolet stabilized polycarbonate diffuser in white opal or clear with anodized high purity aluminium reflector
- Weatherproof and durable silicone rubber gasket
- Integral control gear
- For **clear** polycarbonate diffuser with louvre reflector, please add "-CL" after the six digits
- For **white opal** polycarbonate diffuser, please add "-WO" after the six digits

**Colour** : Ultraviolet stabilized polyester powder coat finish in Black RAL 9005. Other colours are available upon consultation.





			Lumen
<b>401001</b>	Compact fluorescent	2xG24d-3 : 26W	2x1800
<b>401002</b>	Mercury vapour	2xE27 : 50W	2x1800
<b>401003</b>	Mercury vapour	2xE27 : 80W	2x3800
<b>401004</b>	Metal halide	2xE27 : 50W	2x2900
<b>401005</b>	Metal halide	2xE27 : 70W	2x4900
<b>401006</b>	High pressure sodium	2xE27 : 50W	2x3500
<b>401007</b>	High pressure sodium	2xE27 : 70W	2x5600