



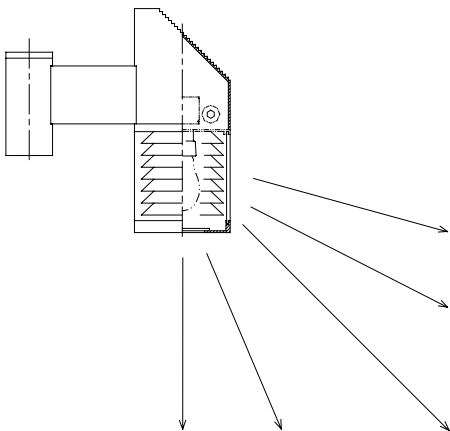
## Pole Top Luminaires

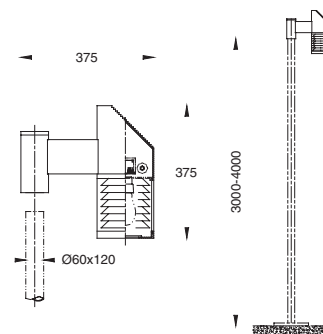
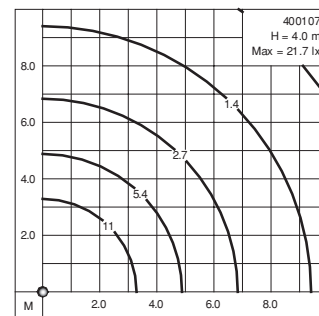
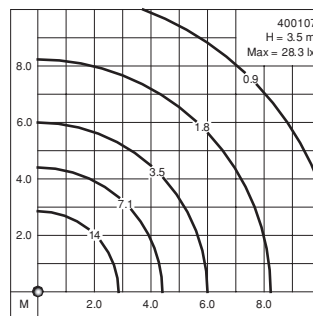
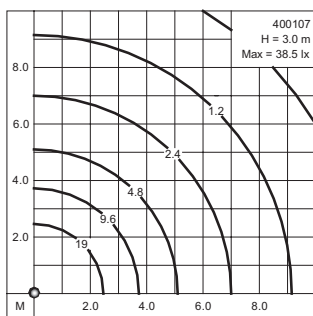
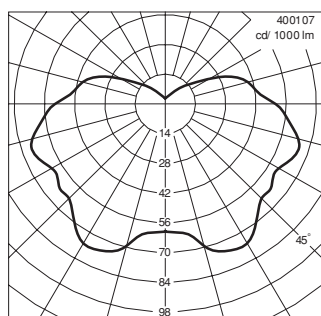
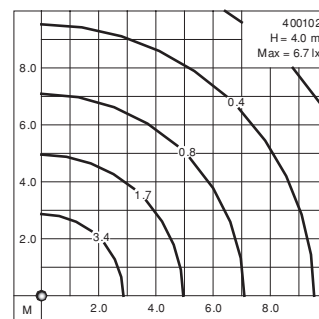
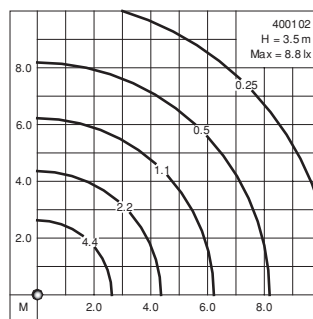
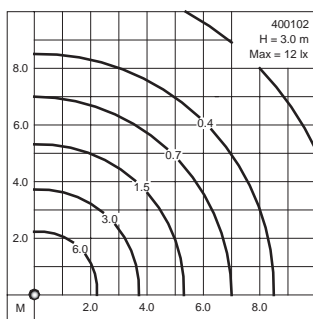
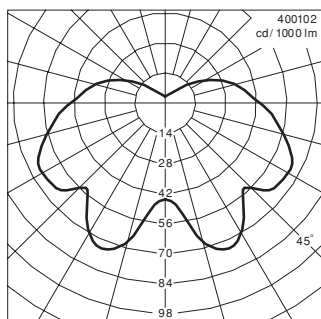
**IP 55** Dustproof and Jetproof conforming to DIN, VDE, IEC.  
**Class I.**

These luminaires with rotationally and downward symmetrical light distribution are designed for pole heights of 3000-4000 mm. providing a pleasant glare free lighting suitable for private and public areas, hotels, parks, gardens and pedestrian precincts.

- Vandal resistant
- Corrosion resistant die cast aluminium alloy
- Stainless steel screws
- Ultraviolet stabilized clear polycarbonate diffuser with anodized high purity aluminium reflector and tempered safety glass lens
- Weatherproof and durable silicone rubber gasket
- Integral control gear

**Colour** : Ultraviolet stabilized polyester powder coat finish in Black RAL 9005. Other colours are available upon consultation.





			Lumen
<b>400101</b>	Compact fluorescent	G24d-3 : 26W	1800
<b>400102</b>	Mercury vapour	E27 : 50W	1800
<b>400103</b>	Mercury vapour	E27 : 80W	3800
<b>400104</b>	Metal halide	E27 : 50W	2900
<b>400105</b>	Metal halide	E27 : 70W	4900
<b>400106</b>	High pressure sodium	E27 : 50W	3500
<b>400107</b>	High pressure sodium	E27 : 70W	5600