



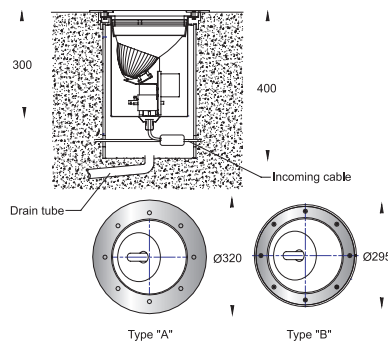
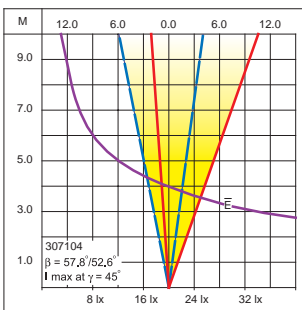
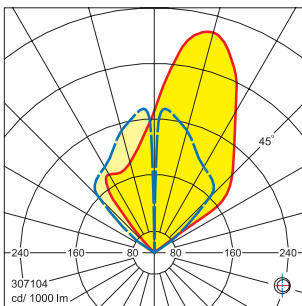
## Inground uplight

### Discharge lamps Halogen lamps

**IP 67** Dusttight and Watertight conforming to DIN, VDE, IEC.  
**Class I.**

The inground uplight luminaires are constructed in 304 grade stainless steel and frame in 316 grade stainless steel. Asymmetric light distribution reflectors are made of anodized high purity aluminium, chemically brightened. Thermal shock resistant safety glass lens sealed with weatherproof and durable silicone rubber gasket can withstand a maximum load of 5000 kgs. Termination is factory-sealed complete with IP 68 cable gland M20x1.5 and flexible cable of 1.5 meters long. Removable reflector and gear assembly unit without tool. This inground uplight luminaire is suitable for illuminating trees, bushes, flagpoles, building facades, etc.

The distance between the luminaires and the illuminated surface of objects must be at least 0.5 meter.



- Corrosion resistant stainless steel housing in 304 grade
- Stainless steel frame in 316 grade
- Stainless steel screws
- Tempered stepped glass lens
- Anodized high purity aluminium reflector
- Weatherproof and durable moulded silicone rubber gasket
- Integral control gear
- Termination with factory-sealed complete with IP 68 cable gland M20x1,5 and flexible cable of 1.5 meters long
- Ultraviolet stabilized polyester powder coat finish in Black RAL 9005

**Remark;** Type "A" or "B" please request

### Accessories

Colour filters -----> See page 32  
Spread/ Flood lens -----> See page 32

		T		Lumen
<b>307101</b>	Halogen	120°	E27 : 150W	2500
<b>307102</b>	Metal halide	40°	G12 : 35W	3300
<b>307103</b>	Metal halide	90°	G12 : 70W	6600
<b>307104</b>	Metal halide	120°	G12 : 150W	14000