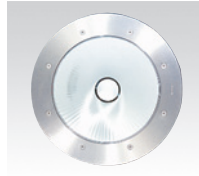
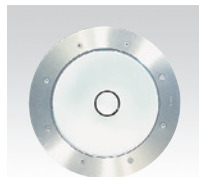


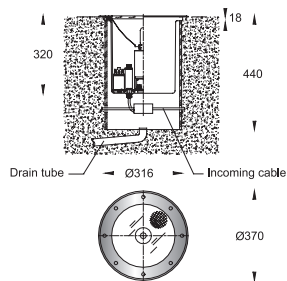
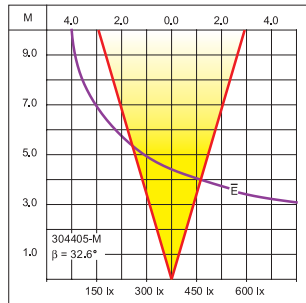
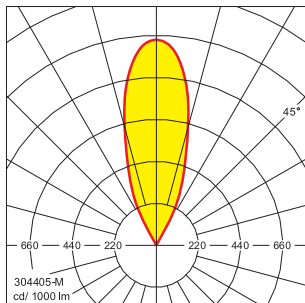
Narrow beam



Medium beam



Wide beam



Inground uplight luminaires

High intensity discharge lamps

IP 67 Dusttight and Watertight conforming to DIN, VDE, IEC.
Class I.

This inground uplight with symmetrical light distribution is designed for high intensity discharge lamps for flush mouting in reinforced surfaces, pathways and squares. The symmetrical reflector is made of anodized high purity aluminium, chemically brightened. The thermal shock resistant safety stepped glass lens 12 mm in thickness sealed with weatherproof and durable moulded silicone rubber gasket can withstand a maximum load of 1500 kgs at the speed of vehicles with pneumatic tyres driving over the luminaires not exceeding 50 km/h. Drainage must be provided for in the course of preparation of the foundation. The distance between the luminaires and the illuminated objects must be at least 0.5 m.

The temperatures (T) attained on the tempered glass lens during the operation must be observed. For safety reasons, when the luminaire is installed in the wet conditions, we recommend using the special skidding-block glass lens (DIN 51130) for public areas used by pedestrians. For board spread light distribution, the skidding-block glass lens must be used.

- Corrosion resistant die cast aluminium alloy housing
- Stainless steel frame in 316 Grade
- Stainless steel screws
- Tempered stepped glass lens 12 mm thick
- Anodized high purity aluminium reflector
- Weatherproof and durable moulded silicone rubber gasket
- Integral control gear
- Termination with factory-sealed complete with IP 68 cable gland M20x1,5 and flexible cable of 1.5 meters long
- Ultraviolet stabilized polyester powder coat finish in Black RAL 9005
- For Narrow beam, add "- N"
- Medium beam, add "- M"
- Wide beam, add "- W"
- suffix to the six digits designation

		T		Lumen
304401	Mercury vapour	80°	E27 : 80W	3800
304402	Mercury vapour	110°	E27 : 125W	6300
304403	Mercury vapour	135°	E40 : 250W	13000
304404	Metal halide	75°	E27 : 70W	4900
304405	Metal halide	103°	E27 : 100W	8000
304406	Metal halide	120°	E27 : 150W	12000
304407	Metal halide	193°	Fc2 : 250W	13000
304408	High pressure sodium	75°	E27 : 70W	5600
304409	High pressure sodium	120°	RX7s-24 : 150W	15000
304410	High pressure sodium	125°	Fc2 : 250W	25500